



DIVERSIFIED  
**MANUFACTURING**  
& ASSEMBLY, LLC

DMA is a leading Minority Business Enterprise (MBE) specializing in precision machining solutions for automotive, agricultural, and off-road applications. With two state-of-the-art facilities in Sterling Heights, Michigan, DMA delivers high-quality, cost-effective products to clients worldwide.



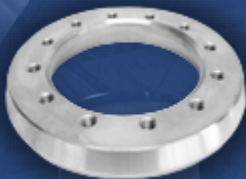
Rear Axle Carriers



Differential Cases



Wheel Hubs



Ring Gear Blanks



Steel Differential Cases



Bearing Caps



HD Brake Flange



HD Brake Flange



LD Brake Flange



DIVERSIFIED  
**MANUFACTURING**  
& ASSEMBLY, LLC

## Our Mission

To provide the highest quality products through process development, innovation, and our commitment to excellence.

<https://diversifiedmanufacturingassembly.com>

## Our Vision

To be "Best in Class" in automotive, agricultural, and off-highway precision manufacturing and assembly.

<https://diversifiedmanufacturingassembly.com>

## Our Products

DMA offers a diverse range of precision-engineered components, including:

- Rear Axle Carriers
- Differential Cases
  - Wheel Hubs
  - Ring Gear Blanks
- Steel Differential Cases
  - Bearing Caps

## Certifications

We maintain up-to-date industry and professional certifications to ensure that all our operations meet or exceed standards for every industry we serve. DMA is certified to Ford Q1, ISO/TS-16949:2009 and ISO-14001:2015. We are preparing for certification to the new IATF 16949 Quality Standard.

Our 45,000-square-foot manufacturing space, equipped with advanced machinery and a skilled workforce, enables us to handle low, medium, and high-volume production while ensuring timely delivery.



# DMA

# DIVERSIFIED MANUFACTURING & ASSEMBLY, LLC

## Machine Capabilities:

Including diametrical "X" axis and "Z"

### Lathes:

Mazak 640T quick turn 250	+/- .0005
Samsung SL-25	+/- .0005
Samsung SL-35	+/- .0005
Samsung SL-25	+/- .0004

### Tolerances

### HMC Machines:

Mazak HMC 630	+/- .0006
NG - 701 HMC	+/- .0007
OKK HM 600	+/- .0005
OKK HM 6300S	+/- .0005

### Tolerances

### VCN/VTC Machines:

Mazak VCN 510C	+/- .0008
Mazak VCN 510C	+/- .0007
Mazak VCN 510C	+/- .0006
Kira twin spindle VMC	+/- .0005
Brother Speedio R650	+/- .0005
Brother SpeedioM140	+/- .0005

### Tolerances

### Fuji Line

(9) Robots  
Leak Testers  
(6) In Line Gantry Robots  
Balancers

+/- .001

## CMM Capabilities:

### Certifications:

Certified Minority Supplier  
IATF-16949:2016  
ISO-14001:2015  
Ford Q1

	<u>X Axis</u>	<u>Y Axis</u>	<u>Z Axis</u>
Zeiss Contura 1:	1000mm	1600mm	600mm
Zeiss Contura 2:	900mm	1200mm	600mm
RS-50 1 & RS-50 2:	1200mm	800mm	600mm
B&S DCC Gage:	400mm	400mm	300mm